



CAFE ROYAL

REGENT STREET, LONDON

A HOTEL OF THE SET

Hotel Café Royal  
*For the Meeting of Great Minds*

Combining architectural heritage with contemporary design, Café Royal has been reincarnated as a luxury hotel in the heart of London's West End, with the elegance of Mayfair to the west and the creativity of Soho to the east.





Welcome to a place  
where international travellers become  
instant insiders.

Where the past is respected and  
the present is relished.

Where glamour and grandeur is coupled  
with contemporary style.

Where everything is nearby and  
nothing is impossible.

Welcome to your home in the heart  
of London.

Welcome to Hotel Café Royal, the here  
and now since 1865.



Historic Regent Street entrance.



MEETINGS,  
EVENTS &  
PRIVATE PARTIES



---

## Meetings, Events & Private Parties

Café Royal, originally the preferred haunt of intellectuals and creatives through the ages, continues its celebrated legacy as the place for great minds to discuss great ideas.

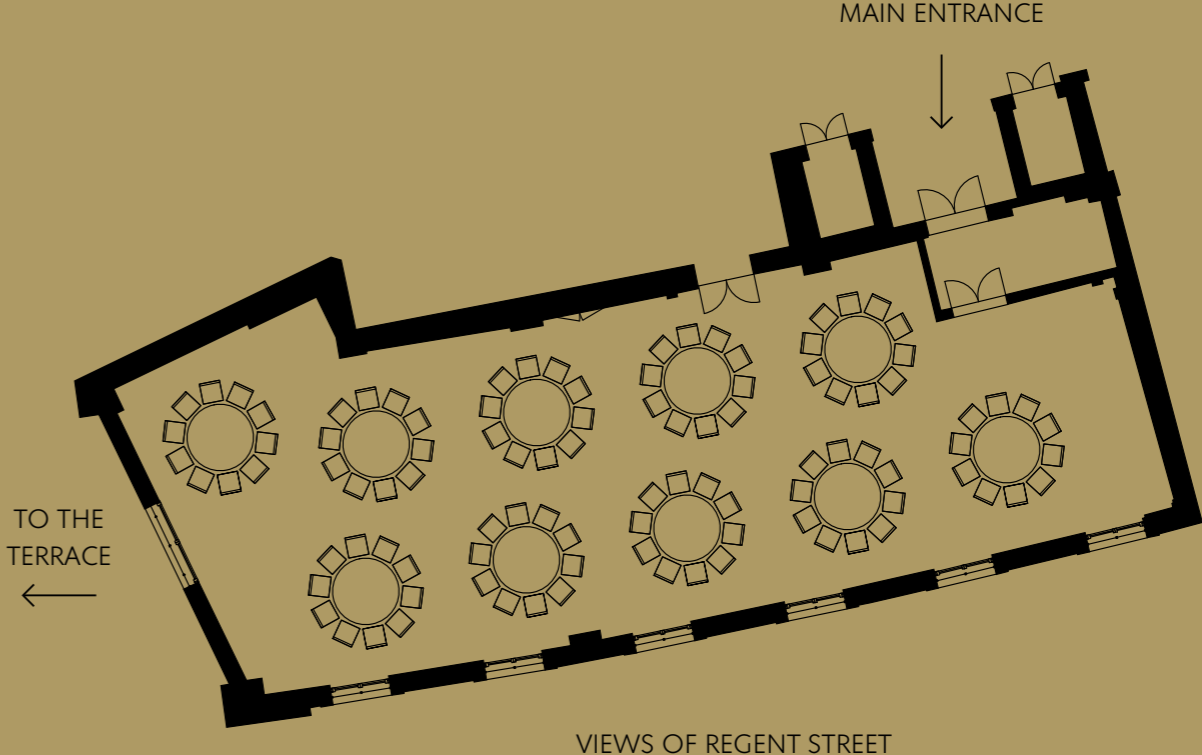
The hotel is perfectly positioned in the heart of central London for meetings and private events ranging from a discreet business dinner, to a lavish wedding, or an exclusive residential conference.



# Pompadour Ballroom

The Pompadour Ballroom is the largest event space, beautifully restored to feature original and ornate detailing and perfect for celebrative receptions, launches, fashion shows and weddings. The Louis XVI style room has a series of fluted Corinthian pilasters and mirrored panels with gilded frames, accented further by a rich decorative ceiling, elaborately depicting scenes of love.

At the far end of the room, large double doors lead onto a pillared outdoor terrace with views on to Air Street and up and down the sweep of Regent Street. The terrace is equipped with patio heaters and can be dressed to include poseur tables or additional seating.



**Key Features**

- Historic Grade II listed room
- Triple-glazed whisper quiet
- Views of Regent Street
- High speed complimentary Wi-Fi
- Natural daylight and motorised curtains for near blackout effect
- Large terrace
- Integrated BOSE sound system
- Capacity to install DJ system
- Three-phase power
- Ability to dress space as desired, i.e. stage, dancefloor, bar, lounge
- Digital touchscreen control for curtains, lights, sound and air conditioning
- 1am licence, extension to 3am possible upon request

**Dimensions**

- Useable Area: 176sqm and 63sqm for the Terrace
- Length / Width: 24.4m x 9.2m
- Height: 3m (Chandelier - 2.10m)

**Configurations**

Reception: 230	Cabaret Style (standard): 63
Banqueting: 120	Cabaret Style (medium): 72
Dinner & Dance: 80	Cabaret Style (large): 81
Finger Buffet: 200	Classroom Style: 60
Buffet (seated): 80	Boardroom Dinner: 110
Theatre Style (without projection): 160	Boardroom Meeting (with projection): 76
Theatre Style (with projection): 160	Hollow Square: 60
	U-Shape: 55



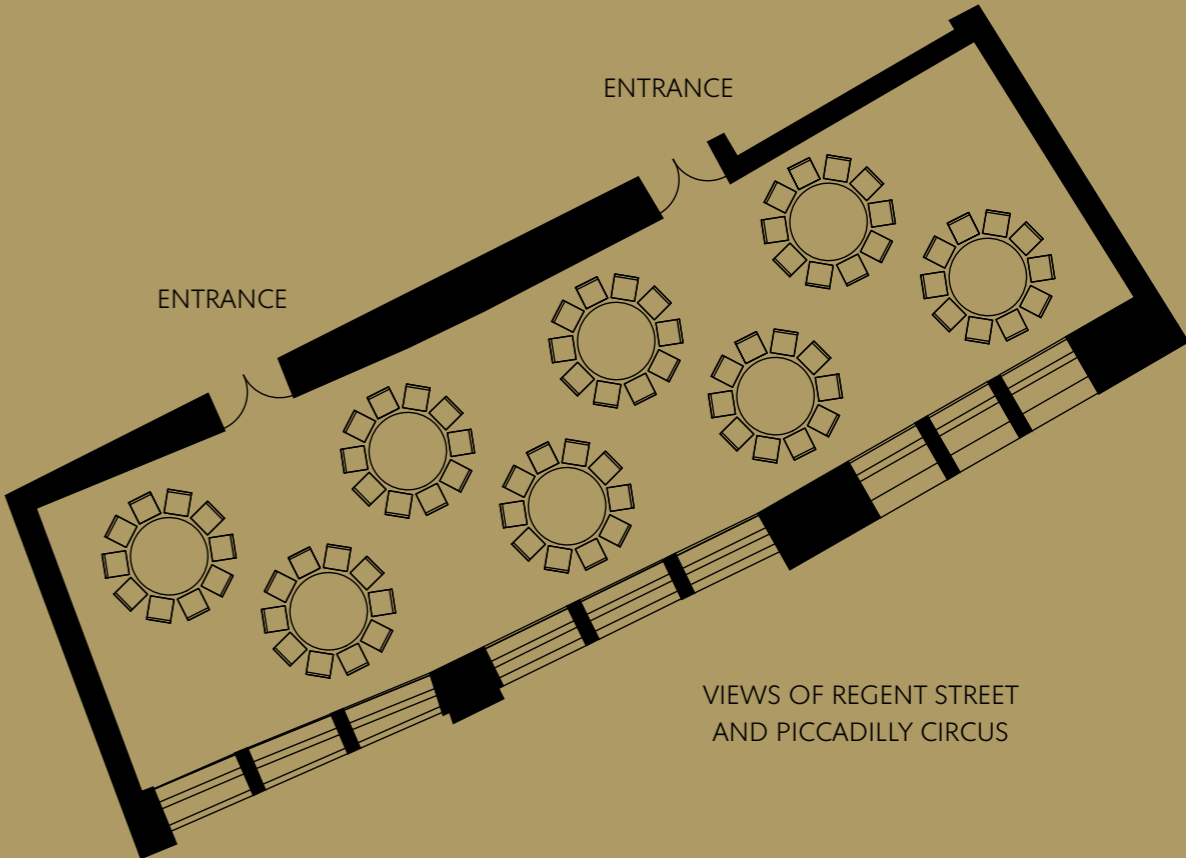


Louis XVI styled Pompadour Ballroom.

# Queensberry

Within the meeting centre at Hotel Café Royal, the Queensberry Suite is a generous space spanning the bottom sweep of Regent Street, ideal for theatre style conferences or banquet dinners. Large floor to ceiling windows give a beautiful vista of the surrounding area, including a view over bustling Piccadilly Circus.

Created in fumed Oak, wall and ceiling panels elegantly conceal state-of-the-art technology accessed easily by touch screen, wall mounted control panels.



### Key Features

- Triple-glazed and acoustic doors for whisper quiet
- Views of Regent Street and Piccadilly Circus
- Natural daylight and motorised sheer and blackout curtains
- High speed complimentary Wi-Fi
- Fully integrated AV system (ceiling hung video projector and drop down projection screen, ceiling speakers, connection panel and microphones)
- Box floor power sockets, and wired internet connection
- Digital touchscreen control for curtains, lights, sound and air conditioning
- 1am licence, extension to 3am possible upon request

### Dimensions

- Useable Area: 141sqm
- Length / Width: 22.1m x 6.2m
- Height: 2.19m

### Configurations

Reception: 180	Cabaret Style (standard): 49
Banqueting: 96	Cabaret Style (medium): 56
Dinner & Dance: 60	Cabaret Style (large): 63
Finger Buffet: 160	Classroom Style: 60
Buffet (seated): 70	Boardroom Dinner: 60
Theatre Style (without projection): 150	Boardroom Meeting (with projection): 57
Theatre Style (with projection): 150	Hollow Square: 40
	U-Shape: 46

# Nash and Nicols

## Nash

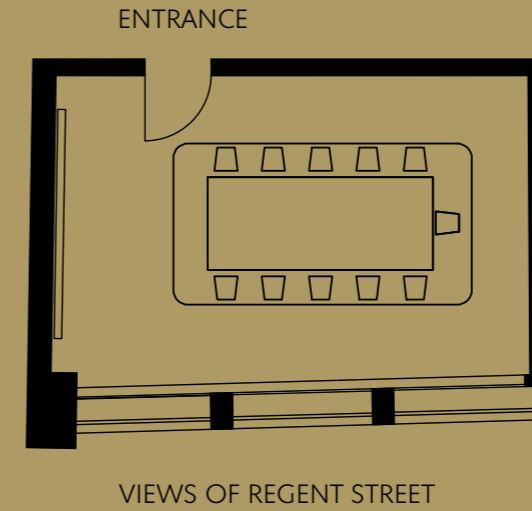
The Nash is created with fumed Oak panels and features large windows overlooking the elegant sweep of Regent Street.

## Nicols

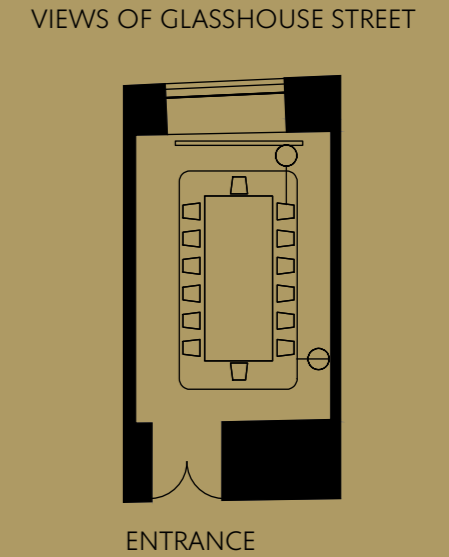
Within the meeting centre, the Nicols is an elegant boardroom style room created in fumed Oak panels. An arched window offers views over Glasshouse Street and basks the room in natural daylight.



## Nash



## Nicols



### Key Features

- Triple-glazed and acoustic doors for whisper quiet
- Views of Regent Street (Nash) or Glasshouse Street (Nicols)
- Natural daylight and motorised sheer and blackout curtains
- High speed complimentary Wi-Fi
- Fully integrated AV system (ceiling hung video projector and drop down projection screen, ceiling speakers, connection panel)
- Box floor power sockets
- Digital touchscreen control for curtains, lights, sound and air conditioning
- 1am licence, extension to 3am possible upon request

### Nash

#### Dimensions

- Usable Area: 26sqm
- Length / Width: 6.4m x 4m
- Height: 2.49m

#### Configurations

- Fixed Boardroom Dinner: 10
- Fixed Boardroom Meeting (with projection): 11
- Fixed Boardroom Meeting (without projection): 12

### Nicols

#### Dimensions

- Usable Area: 32sqm
- Length / Width: 7.2m x 4.4m
- Height: 2.38m

#### Configurations

- Reception: 30
- Finger Buffet: 25
- Theatre Style (without projection): 25
- Theatre Style (with projection): 25
- Boardroom Dinner: 16
- Boardroom Meeting (with projection): 13

# Mayfair and Soho

## Mayfair

The Mayfair is the perfect sized room for intimate gatherings or moderately sized meetings. Created with fumed Oak panels, this space features large windows offering natural daylight overlooking Glasshouse Street.

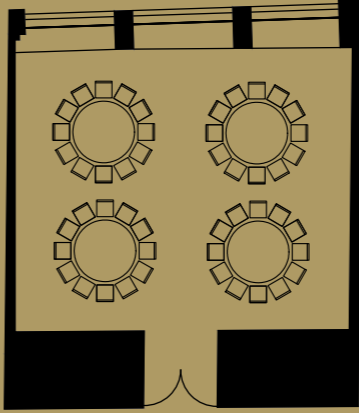
## Soho

The Soho is an intimate and discreet meeting space at Hotel Café Royal. The more modest size makes it ideal for board and business meetings, as well as for private dining for smaller gatherings, boasting natural daylight with windows overlooking Glasshouse Street.



## Mayfair

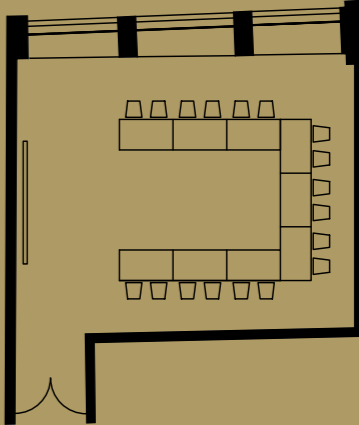
Views of Glasshouse Street



Entrance

## Soho

Views of Glasshouse Street



Entrance

### Key Features

- Triple-glazed and acoustic doors for whisper quiet
- Views of Glasshouse Street
- Natural daylight and motorised sheer and blackout curtains
- High speed complimentary Wi-Fi
- Fully integrated AV system (ceiling hung video projector and drop down projection screen, ceiling speakers, connection panel)
- Box floor power sockets
- Digital touchscreen control for curtains, lights, sound and air conditioning
- 1am licence, extension to 3am possible upon request

## Mayfair

### Dimensions

- Useable Area: 58sqm
- Length / Width: 8.4m x 6.9m
- Height: 2.38m

### Configurations

- Reception: 60
- Banqueting: 44
- Finger Buffet: 50
- Buffet (seated): 33
- Theatre Style (without projection): 54
- Theatre Style (with projection): 45
- Cabaret Style (standard): 28
- Cabaret Style (medium): 32
- Cabaret Style (large): 36
- Classroom Style: 29
- Boardroom Dinner: 20
- Boardroom Meeting (with projection): 15
- Hollow Square: 30
- U-Shape: 23

## Soho

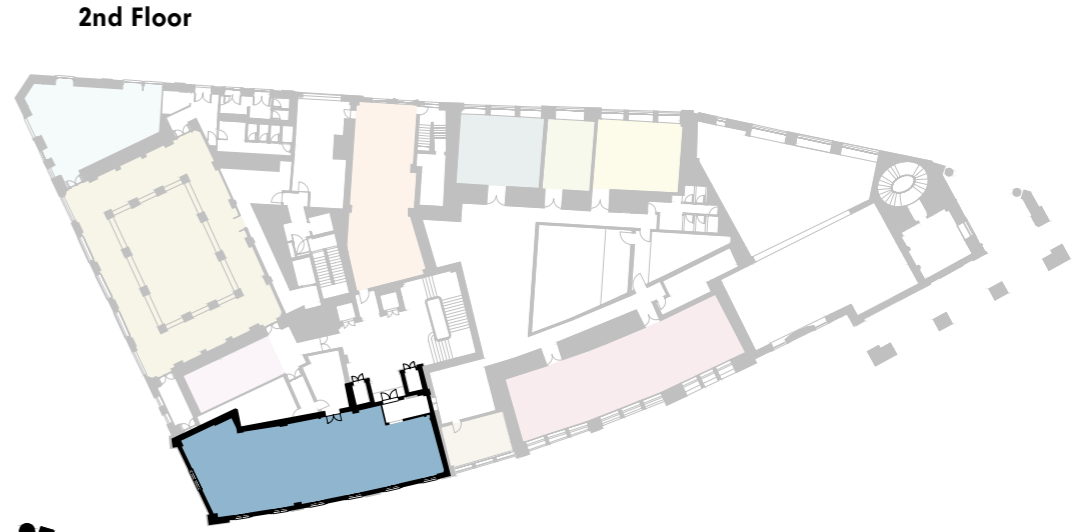
### Dimensions

- Useable Area: 59sqm
- Length / Width: 8.5m x 6.9m
- Height: 2.35m

### Configurations

- Reception: 60
- Banqueting: 44
- Finger Buffet: 50
- Buffet (seated): 33
- Theatre Style (without projection): 54
- Theatre Style (with projection): 45
- Cabaret Style (standard): 28
- Cabaret Style (medium): 32
- Cabaret Style (large): 36
- Classroom Style: 30
- Boardroom Dinner: 20
- Boardroom Meeting (with projection): 15
- Hollow Square: 30
- U-Shape: 23

# Capacity Chart and Floorplan



**1st Floor**

- Library Bar
- Gallery
- Private Dining Room
- The Studio
- Nash
- Queensberry
- Soho
- Nicols
- Mayfair
- The Domino

**2nd Floor**

- Pompadour Ballroom

	Nash	Nicols	Mayfair	Soho	Queensberry	Pompadour
<b>Size (sqm/sqft)</b>	<b>26sqm/ 280sqft</b>	<b>32sqm/ 344sqft</b>	<b>58sqm/ 624sqft</b>	<b>59sqm/ 635sqft</b>	<b>141sqm/ 1,517sqft</b>	<b>176sqm/ 1,894sqft</b>
Reception	-	30	60	60	180	230
Banqueting	-	-	44	44	96	120
Dinner & Dance	-	-	-	-	60	80
Finger Buffet	-	25	50	50	160	200
Buffet (seated)	-	-	33	33	70	80
Theatre Style (without projection)	-	25	54	54	150	160
Theatre Style (with projection)	-	25	45	45	150	160
Cabaret Style (standard)	-	-	28	28	49	63
Cabaret Style (medium)	-	-	32	32	56	72
Cabaret Style (large)	-	-	36	36	63	81
Classroom Style	-	-	29	30	60	60
Boardroom Dinner	10	16	20	20	60	110
Boardroom Meeting (without projection)	12	-	-	-	-	-
Boardroom Meeting (with projection)	11	13	15	15	57	76
Hollow Square	-	-	30	30	40	60
U-Shape	-	-	23	23	46	55



GUESTROOMS  
& SUITES

---

## Guestrooms & Suites

Created in rusticated Portland stone to mirror the elegant Regent Street façade, or panelled in fumed English Oak, 160 contemporary guestrooms and suites give an incredible sense of place and have been designed to feel like private apartments at the heart of the capital. Amongst this collection, six signature suites are reminiscent of Café Royal's glorious past, each boasting a unique character and aesthetic.





Weaving historical detail with contemporary design, the Empire Suite is the largest suite at Hotel Café Royal. 212sqm/2,282sqft.





RESTAURANTS  
AND BARS



---

## Restaurants and Bars

At the heart of the hotel, the Ten Room offers British informal dining all day.

The Domino is the new, refined dining experience completing Hotel Café Royal's return to London's vibrant social scene. Revivifying the glamour of entertaining, members of The Club at Café Royal and hotel guests will dine under an elegant canopy of intricate and beautifully restored cartouches, like the icons of London society before them.

Fronting Regent Street, The Café celebrates the European tradition of café culture. It offers a light menu of seasonal dishes alongside an espresso bar and counters lined with cakes, pastries and chocolates; these are created fresh every day by Hotel Café Royal's in-house executive pastry chef.



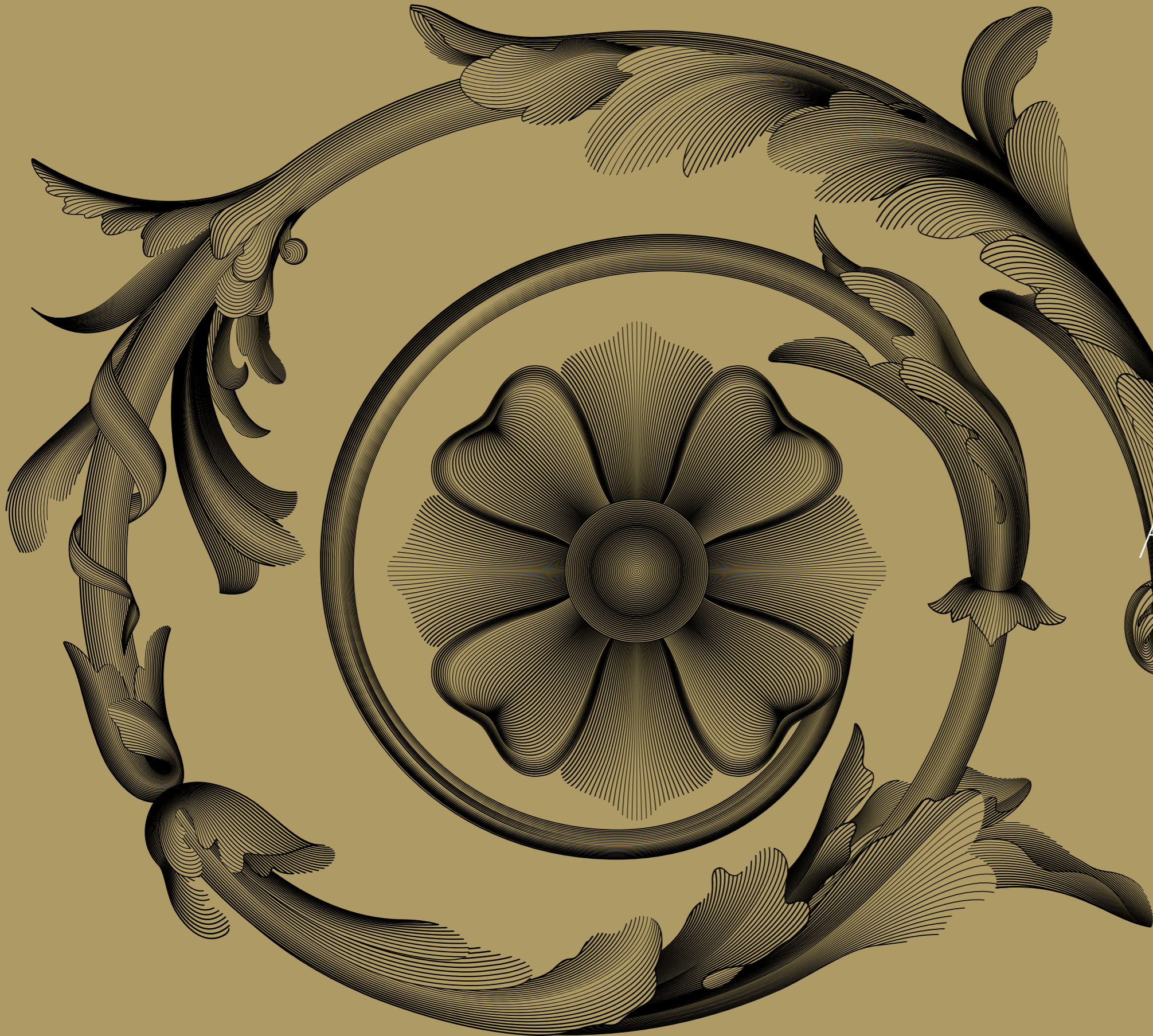
---

## Restaurants and Bars

Inspired by the Café Royal Cocktail Book compiled in 1937, the Green Bar at Hotel Café Royal is a vibrant cocktail destination both for contemporary Londoners and hotel guests.

Originally established in 1865, the Oscar Wilde Bar, formerly the legendary Grill Room, is the jewel of Hotel Café Royal. Restored to its original Louis XVI décor, it is now the place to enjoy afternoon tea, Champagne, sparkling wines and a light menu, complemented by live entertainment on select evenings.





AKASHA

---

## Akasha

The Akasha Holistic Wellbeing Centre is an urban retreat spanning over 1,200sqm/13,000sqft. Reflecting a core vision to harmoniously unite the four natural elements of nature, Akasha features four corresponding spaces; earth offers nourishment in the lounge bar, water flows through the spa, fire blazes across the gym and air breezes through the studios.





# Summary of Facilities

## GUESTROOMS & SUITES

### Guestrooms

Portland Guestrooms (35sqm/376sqft)

Portland Deluxe Guestrooms  
(40sqm/430sqft)

Mansard Guestrooms (35sqm/344sqft)

Mansard Deluxe Guestrooms  
(40sqm/430sqft)

### Suites

Junior Suites (52sqm/560sqft)

Westminster Suites (61sqm/657sqft)

Glasshouse Suites (66sqm/710sqft)

Regent Suites (90sqm/969sqft)

Oscar Suite (108sqm/1,063sqft)

### Signature Suites

Marquis (81sqm/872sqft)

Club (105sqm/1,130sqft)

Tudor (106sqm/1,141sqft)

Celestine (178sqm/1,916sqft)

Empire (212sqm/2,282sqft)

Dome (206sqm/2,217sqft)

## GUESTROOM AMENITIES/FACILITIES

Personal Butler service on request

Butler's Pantry with complimentary  
Nespresso coffee

24hr In-Room Dining

Frette Linen

Designer British bathroom amenities  
from Floris

Bathroom mirror TV screen

Bang & Olufsen entertainment system

Superior stereo sound for wireless  
music connectivity

Media hub

High-speed complimentary Wi-Fi

Air conditioning

## RESTAURANTS & BARS

Ten Room

Green Bar

Oscar Wilde Bar

The Domino

The Café

In-Room Dining

## MEETINGS & EVENTS CENTRE

Two banqueting suites and four meeting,  
conference and social function rooms.

Nash (26sqm/280sqft)

Nicols (32sqm/345sqft)

Mayfair (58sqm/625sqft)

Soho (59sqm/635sqft)

Queensberry (141sqm/1,518sqft)

Pompadour (176sqm/1,895sqft)

## AKASHA HOLISTIC WELLBEING CENTRE (1,200sqm/13,000sqft)

Lap pool (18m/60ft long)

Gym

Spa

Sauna, steam room and Jacuzzi

Watsu, Vichy and Hammam  
signature experiences

Yoga, Tai Chi and Pilates Studio

Meditation Room

Lounge Bar

## ACCESS

Hotel Café Royal is located in central  
London, easily accessible from major  
airports and rail/underground stations

### Air

Hotel Café Royal has its own airport  
transfer service

LONDON HEATHROW:

Car: 50min

Heathrow Express: 15min to/from  
Paddington Station

Underground Piccadilly line: 1h 15min

LONDON GATWICK:

Car: 1h 30min

Gatwick Express: 30min to/from  
Victoria Station

### Rail

#### London Underground

Hotel Café Royal is less than a minute's walk  
from Piccadilly Circus station served by the  
Bakerloo and Piccadilly lines

#### National Rail

Paddington Station to London Heathrow:  
15min from Hotel Café Royal by car or  
Underground for services

Victoria Station to London Gatwick: 15min  
by car or Underground

Euston Station: 20min from Hotel Café  
Royal by car or Underground

King's Cross Station: 20min from Hotel Café  
Royal by car or Underground

Waterloo: 20min from Hotel Café Royal by  
car or Underground

#### International Rail

St Pancras Station: 20min from Hotel Café  
Royal by car or Underground, for Eurostar  
services to the Continent

View from the Dome Suite.



Conservatorium, Museumplein, Amsterdam.



### The Set Hotels

*At home in the heart of the city*

The Set is a collection of individual hotels created to redefine the concept of the luxury hotel for sophisticated, design literate travellers of the 21st Century. Working to an uncompromising brief that called for hotels that were not only of the moment but that would define their times and locations, architects and designers of the calibre of Piero Lissoni, Sir David Chipperfield and Jean-Michel Wilmotte have been recruited to marry the old with the new and create beautiful grand hotels.

*thesethotels.com*

Lutetia, Rive Gauche, Paris.  
Refurbishments started mid 2014.



Hotel Café Royal, Regent Street, London.



**HOTEL CAFÉ ROYAL**  
68 REGENT STREET, LONDON W1B 4DY  
UNITED KINGDOM

TELEPHONE +44 (0)20 7406 3333  
FAX +44 (0)20 7406 3366  
ENQUIRIES@HOTELCAFEROYAL.COM

**RESERVATIONS**  
TELEPHONE +44 (0)20 7406 3322  
USA TOLL FREE 1 855 919 3580  
RESERVATIONS@HOTELCAFEROYAL.COM

**GROUPS, EVENTS, MEETINGS,  
PARTIES AND CONFERENCES**  
TELEPHONE +44 (0)20 7406 3333  
GROUPSANDEVENTS@HOTELCAFEROYAL.COM  
HOTELCAFEROYAL.COM



T | H | E  
S | E | T

HOTELS

**CAFÉ ROYAL**

REGENT STREET, LONDON

**CONSERVATORIUM**

MUSEUMPLEIN, AMSTERDAM

**LUTETIA**

RIVE GAUCHE, PARIS  
(COMING SOON)



LEADING  
HOTELS®